



# Why and How to start a Local SCB Chapter



SCB CHAPTERS

## Chapters

Working locally to achieve conservation success

For the SCB Oceania Section Meeting  
July 2014, Suva, Fiji  
Rosalynn Anderson-Lederer



# Chapters

Working locally to achieve conservation success

What is a  
local  
chapter?

Why would I  
want to join  
a local  
chapter?

How do I  
start a local  
chapter?

We can help guide your chapter every step of the way



# What is a local chapter?

**Grassroots of the organization** —



Chapters are affiliates of SCB that serve an area such as a university, town, region, state, eco-region, country, or several small countries.

The purpose of Chapters is to provide a way for SCB members (and others) in local areas to organize and network around the mission of the Society.

Chapters are a way of “acting locally” while the parent society is a way of “thinking globally.”

## **Africa Chapters (1 Chapters)**

East Africa Chapter (inactive)  
Namibia Chapter (forming)  
Nigeria Chapter

## **Asia Chapters (1 Chapters)**

China Chapter  
India Chapter (forming)

## **Europe Chapters (3 Chapters)**

Armenian Chapter  
Hungarian Chapter  
Switzerland Chapter

## **Latin America & Caribbean Chapters (3 Chapters)**

Bolivia Chapter  
Central Mexico  
Colombia Chapter (forming)  
Cuba Chapter  
Northwest Argentina Regional Chapter (inactive) \*  
Peru Chapter (forming)

## **North America Chapters**

### **Canada (2 Chapters)**

Kingston Chapter – Ontario  
Toronto Chapter - Ontario  
Vancouver Chapter (forming)

### **United States Chapters (29 Chapters)**

Northeastern US (4 Chapters)  
Midwestern US (4 Chapters)  
Southern US (9 Chapters)  
Western US (12 Chapters)

### **Oceania Chapters (3 Chapters)**

Brisbane and UQ Chapter (Australia)  
Sydney Region Chapter (Australia)  
Wellington VUW Chapter  
(New Zealand)

# Chapter Grants

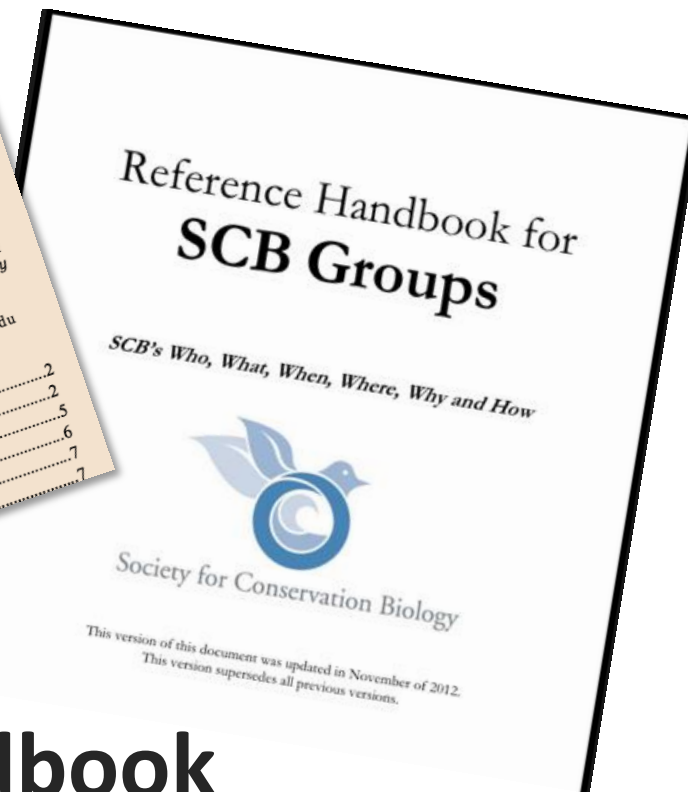
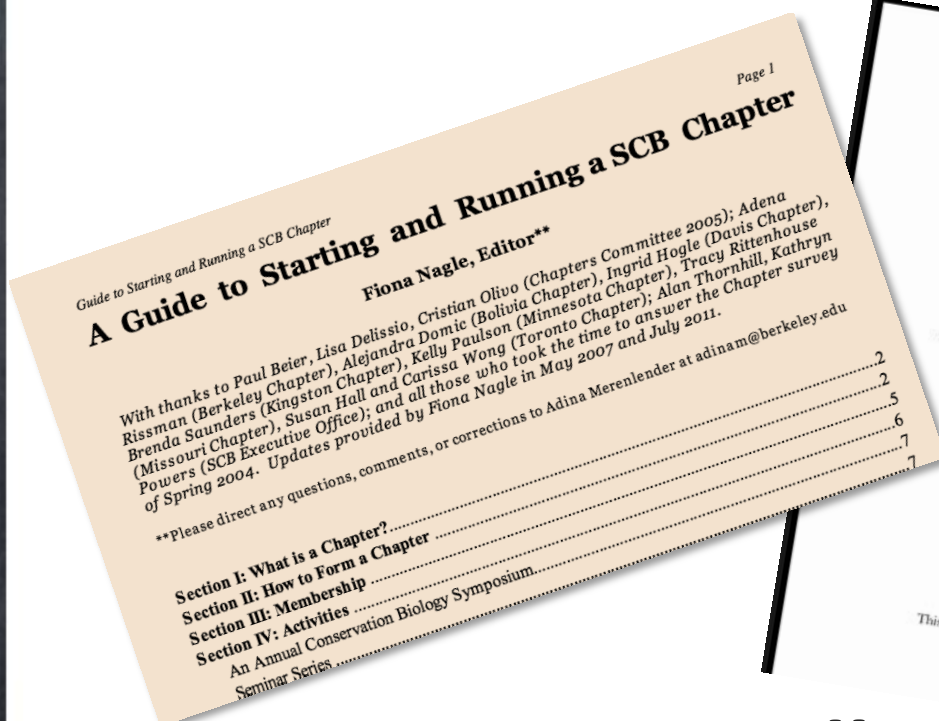
- Chapter Project Grants open to all active and registered SCB Chapters.
- Grants are made on a first-come first-serve basis.
- Limited funds available and the grant application will be closed when funds run out.
- Chapter grants announced when funds are available.



# Annual Registration

Annual registrations are due  
JANUARY 31 of each year in order  
for a Chapter to remain active.

# SCB Guide to Starting and Running an SCB Chapter



# SCB Groups Handbook

Both are downloadable on the [www.conbio.org](http://www.conbio.org) website





**Why** would I want to join a chapter?



## Benefits of joining a chapter

- A professional resource for finding jobs
- Projects that you have wanted to start
- Facilitation of continuing education lectures or classes
- Support for community and regional conservation projects and education
- Avenues for public and political advocacy for conservation opportunities for members to share local information and resources
- Moral and social support for professionals and students

## **Chapter membership can be tailored to meet the needs of members**

As of 2011:

~ 1/3 of Chapters were comprised of mostly students

~ 1/3 of mostly professional members

~ 1/3 with a mix of students and professionals

# Chapter Activities

**Chapter activities can be tailored to meet the needs of members**

Choose one or two things the you want your local chapter to do well

**RESTORATION PROJECTS**

**Lecture series**

**Field trips**

**Community support**

**Public Policy**

**Educational outreach**



# Chapter Activities

## Oceania chapter activities

Wellington - VUW Chapter  
(first chapter in Oceania)



Field trips: Mistletoe transplanting, Tramping, Beach clean-ups, Dives



Penguins nest box monitoring

Newsletter



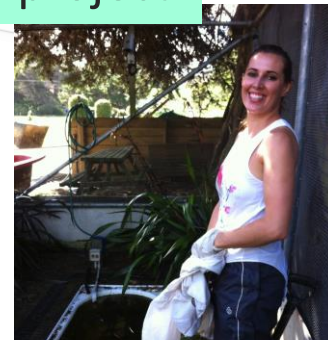
Kumutoto restoration project



Seminar series



Wellington Bird Rehabilitation Trust



## Oceania chapter activities

Sydney Chapter  
(in their second year)

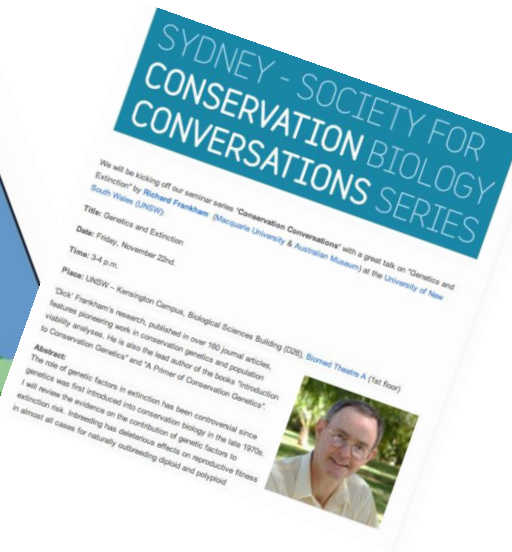


SYDNEY - SOCIETY FOR  
CONSERVATION BIOLOGY

Field trips: Beach clean-ups



Seminar series



Grant writing



Penguins monitoring & reporting

Policy





## Oceania chapter activities

Brisbane Chapter  
(recently re-activated)



Society for Conservation Biology  
Brisbane-UQ Chapter

A community of conservation professionals based in Brisbane and The University of Queensland



*Previously focused on policy...*

Now branching into new directions

# Conferences

## Section and Global Conferences



# Chapters are happy to help each other

SCB Missouri  
Chapter



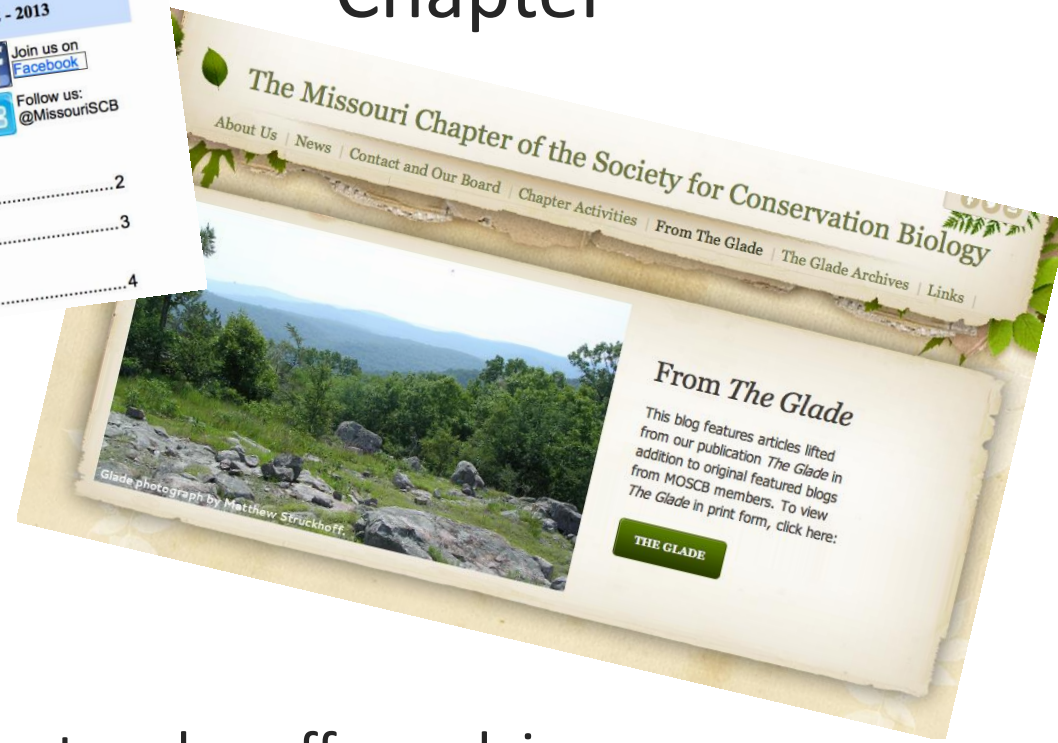
SCB Bolivia Chapter

These chapters an offer advice and curricula for  
Education Outreach Programs

Supporting each other



# SCB Missouri Chapter



The Missouri chapter also offers advice on running Poster Competitions and Publishing a Newsletter and Blogging



# Supporting each other

Minnesota and Missouri offer advice on website development

Minnesota Chapter of the Society for Conservation Biology

Home  
About Us  
Board Members  
SCB Membership  
2014 Annual Meeting  
2013  
2012  
2011  
2010  
2009  
2008  
2007  
News  
Gallery  
Resources  
Contact Us  
Get Involved

Become a member of the MNSCB

Search this site

Connecting Minnesota's conservation science community  
Advancing conservation science and its impact on our conservation legacy

Recent Announcements  
Give your input! | ESSARD-SAMS Outdoor Heritage Council Invites Public Input to the Outdoor Heritage Fund Call

The Missouri Chapter of the Society for Conservation Biology

About Us | News | Contact and Our Board | Chapter Activities | From The Glade | The Glade Archives | Links

Field of yellow coneflowers photographed by Alice Tipton.



# How do I start a local chapter?

Remember, we're here to help you at every step of the way



**DONE... Who's in with me?**  
I want to start a chapter

Woohoo!! We are!!

You'll need to create timeline  
... and a list of potential resources  
... and a preliminary focus and  
structure of the Chapter  
... and an outline of the first meeting

**Form a game plan**



## Comittee Members

[Cagan Sekercioglu](#)

**Chair**

Chapters Representative to the  
SCB Board of Governors

[Jessa Madosky](#)

Vice-chair and  
Financial Affairs

[Alysha Cypher](#)

New Chapters Coordinator; Secretary

**Adam Zettinger**

Social media Networking

**Amanda Kuntz**

Webmaster (main SCB Chapters pages)

**Kelly Pennington**

Web Coordinator (individual Chapter sites)

**Marit Wilkerson**

Conferences

**Andrew Gregory**

**Position open, if interested contact**

Public Policy (North America Chapters)

**Jessa Madosky**

**Position open, if interested contact**

Education (SCB Education Committee  
Liaison)

**Jessa Madosky**

**Sadie Ryan**

Student Affairs (SCB Student Affairs Sub-  
Committee Liaison)



Home About SCB

SCB is  
adv  
science  
of cor  
Earth  
d  
Mor

Regio

Loc

Worl



Member Sp  
Stephen A

Miriam Rothschi  
Stephen Awoyer  
making a differe



Autograd  
Chapter

Discuss the documents with your group, be sure to fill in the various “blanks”, and sign all three documents.

Then return all three to the Chair of the Chapters Committee.

The documents will be reviewed by the Chapters Chair and ratified by the SCB president.



SCB CHAPTERS

Chapters

Working locally to achieve conservation success

Thank you

Questions?